



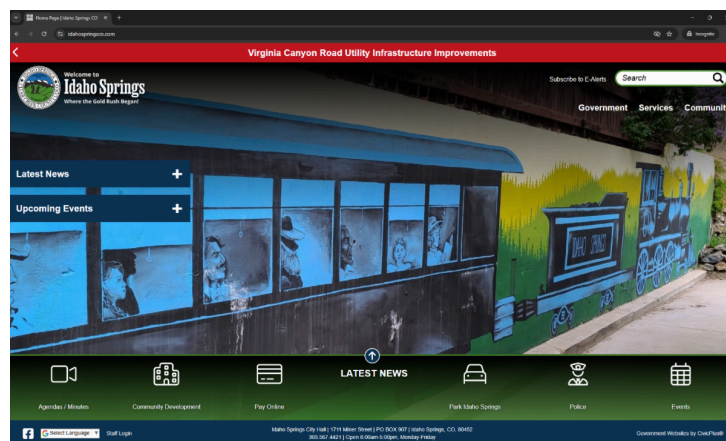
GOVERNMENT

Idaho Springs, CO on Open.Media

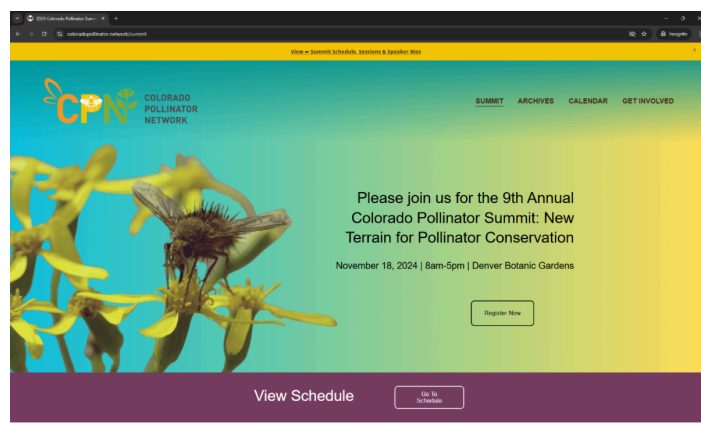
The City of Idaho Springs is the most populous municipality in Clear Creek County, Colorado. As of the 2020 census it had a population of 1,782. Idaho Springs is located in Clear Creek Canyon, in the mountains upstream 30 miles west of Denver.

Founded in 1859 by prospectors during the early days of the Pike's Peak Gold Rush, the town was at the center of the region's mining district throughout the late nineteenth century. During the late twentieth century, the town evolved into a tourist center ascending Clear Creek Canyon through the historic mining district.

[Watch Idaho Springs, CO Public Meetings on Demand](#)



VIDEO PRODUCTION



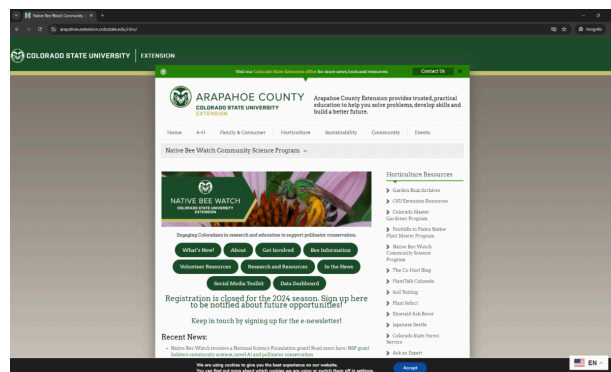
Open Media Recorded Colorado Pollinator Network's 9th Annual Colorado Pollinator Summit: New Terrain for Pollinator Conservation

The Colorado Pollinator Summit brings together people from different walks of life, including policymakers, community members, land managers, teachers, artists, gardeners, and researchers to share ideas and perspectives to work together and support one another to protect our natural world and our communities through a shared love of pollinators.

[Visit The Colorado Pollinator Network and Summit Website](#)

New Terrain for Pollinator Conservation

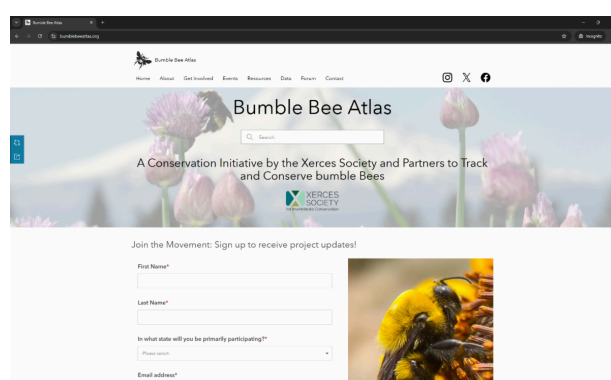
Learn how to become a community scientist by taking walks in nature and collecting data on pollinators. Four volunteer organizations are training people to identify pollinators and their habitats. The community scientists or observers can then contribute their collected data to a large collective. Conservation efforts are then guided by results gleaned through these large data collectives from observers.



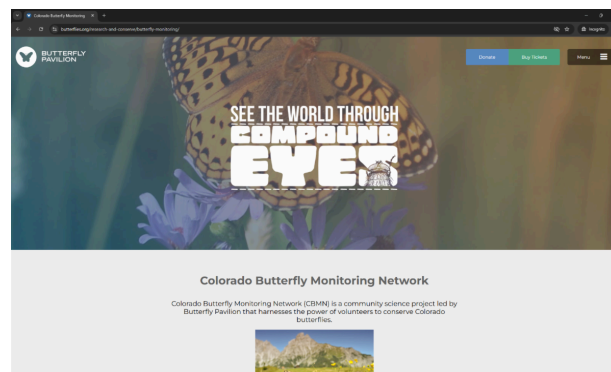
Native Bee Watch Native Bee Watch is a community science biodiversity monitoring project that began in 2016 at Colorado State University. The project is now a statewide program within Colorado State University Extension.

There are over 1,000 native bee species in Colorado! With this incredible diversity, we want to learn more about the bees and the plants they are pollinating. Pollinators are responsible for one-third of the human diet including vegetables, fruits and nuts – the most nutritious part of our diet. Over 75% of plants on earth need pollinators to reproduce.

Native Bee Watch is a community science program so that the community can be involved in research. Volunteers learn about bee biology and identification, and become a steward for pollinators and the environment.



Bumble Bee Atlas The Atlas is a community science project aimed at gathering the data needed to track and conserving bumble bees. The information that we have suggests that many species of bumble bees face an uncertain future, but we lack the data needed to implement effective conservation measures, especially at the regional scale. Anyone is welcome to participate and help contribute to a better understanding of bumble bee needs.

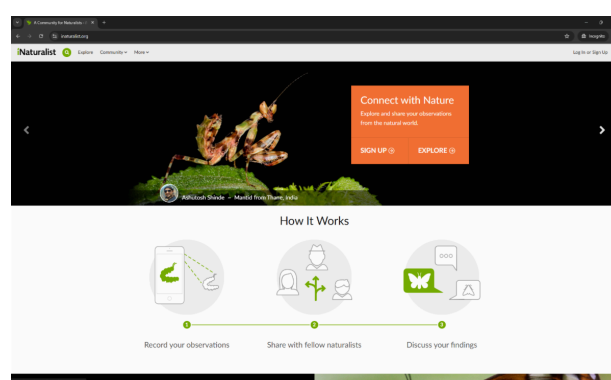


Colorado Butterfly Monitoring Network Established in 2013, the Colorado Butterfly Monitoring Network (CBMN) is a long-term community science project led by Butterfly Pavilion that harnesses the power of volunteers to conserve Colorado butterflies.

Butterflies are not only beautiful, but they also play a vital role in the ecosystem, serving as both pollinators and as food for other animals. Knowing which butterflies are active in our state gives us important information about the health of our local ecosystems.

CBMN volunteers observe and record butterflies in open spaces and parks multiple times per season, gathering essential data that land managers can use when making conservation decisions. It's a fantastic chance to get outdoors and learn about butterflies, while having a positive impact on conservation in Colorado.

No experience is necessary to participate and all are welcome!



iNaturalist Record your observations. Share with fellow naturalists. Discuss your findings. Every observation can contribute to biodiversity science, from the rarest butterfly to the most common backyard weed. Findings are shared with scientific data repositories like the Global Biodiversity Information Facility to help scientists find and use your data. All you have to do is observe.

CAREER ENGINE



Media Job Opportunities

Our [Open Media Career Engine](#) is a service offered to Employers in the Media & Journalism sector to help you find and hire more diverse jobseekers. This program has helped over 40 employers in Colorado's Media & Journalism field hire POC jobseekers at more the double the industry average. We help craft your job description to appeal to diverse applicants, post it to over 20 job boards proven to generate more diverse jobseekers, and manage the screening process so that even the smallest HR team can afford a broad and inclusive hiring process developed by industry leaders.

Email careers@openmediafoundation.org to explore how the OMCE can help you with your next hire.

Join an Open Media Committee

Committees

- **Fundraising Committee** - Contact Tony Shawcross at tony@openmediafoundation.org

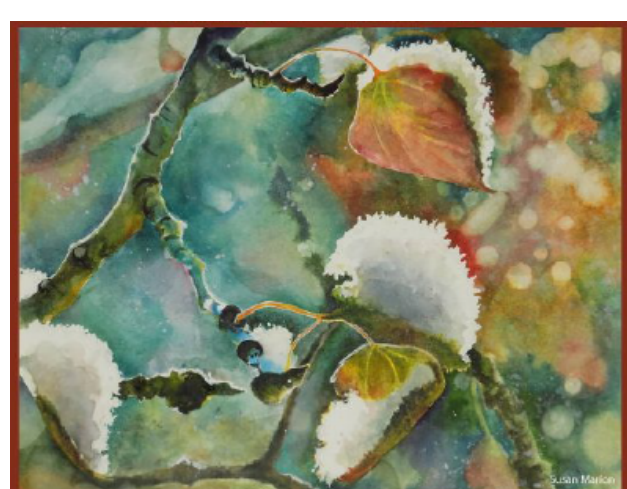
ANNOUNCEMENTS



Denver Botanic Gardens Present Blossoms of Light

Consistently lauded as one of the top holiday light shows in the nation, Blossoms of Light is a spectacular celebration that illuminates the York Street location. Visitors can wander a mile-long path through immersive, luminous displays that accentuate and highlight the plant collections. A cherished holiday tradition for nearly four decades, Blossoms of Light is constantly evolving to inspire wonder and delight in even the most seasoned visitors. In line with a core value of sustainability, all lights used are LED.

[Denver Botanic Gardens](#)
Nov. 20 – Jan. 12, 4:30-9 p.m. (closed Nov. 28 & Dec. 25)



Sangres Art Guild's Holiday Show

Sangres Art Guild's final show of the 2024 season features original pieces by fabulous local and regional artists, making unique gifts friends and family will treasure for generations.

Close out the year by visiting the 3rd Street Gallery, in beautiful downtown Westcliffe, between December 5 and December 22.

[3rd Street Gallery](#)
59000 N. Highway 69
Westcliffe, CO 81252

[December 5 @ 11:00 am - December 22 @ 4:00 pm](#)
[Free](#)

